



ACCESS PROGRAM PHILOSOPHY

The ACCESS Program curriculum is accessible to survivors, inclusive of culture, considers the impact of women's violence experiences, and addresses their specific vocational needs. Power and control wheels, a counseling for empowerment model, and critical consciousness raising techniques are used to facilitate Program sessions. ACCESS builds on the values, strengths, and skills of survivors and their communities.

**For more information,
visit our website:**

www.access-dv.org

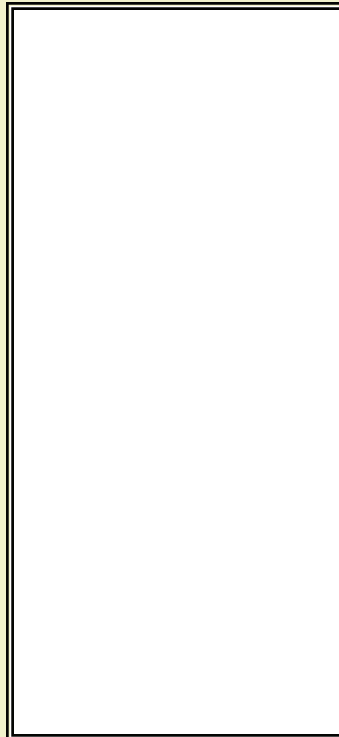
Or contact:

Krista M. Chronister, PhD
ACCESS & Counseling Psychology
5251 University of Oregon
Eugene, OR 97403-5251

541-346-2415

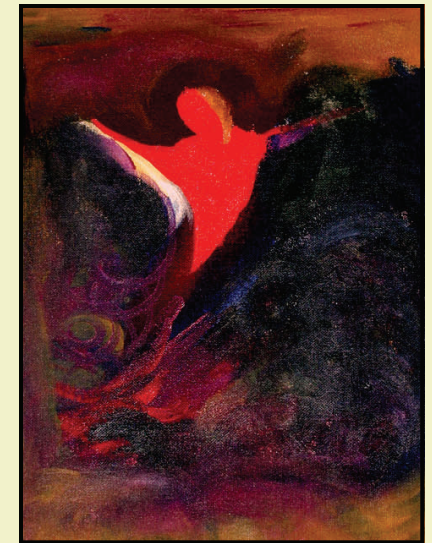
kmg@uoregon.edu

Krista M. Chronister, PhD
ACCESS & Counseling Psychology
5251 University of Oregon
Eugene, OR 97403-5251



ACCESS

Helping survivors find
work and careers.



Survivor I, by Audrey Desjarlais

The ACCESS Program:
Advancing Career Counseling
and Employment Support for
Survivors of Domestic Violence

ACCESS PROGRAM OVERVIEW

The ACCESS program is for social service providers, educators, and researchers who want to offer career and employment services to women survivors of domestic violence.

The ACCESS Program is a series of five group counseling sessions, facilitated through the use of ACCESS Program materials.

The Program objectives are:

- Support women as they explore and identify their job and career interests.
- Help women identify, develop, and use work-related skills.
- Increase women's use of technology to explore work and career opportunities.
- Increase women's knowledge of various work and career opportunities.
- Help women identify and plan their short- and long-term career goals.
- Connect women with community resources and support networks.



Program activities outlined in the curriculum manual and participant workbooks include:

- written exercises
- individual work assessments
- work and educational training information
- role modeling emphasis
- attention to building support networks and using the internet-based Career Information System (CIS)

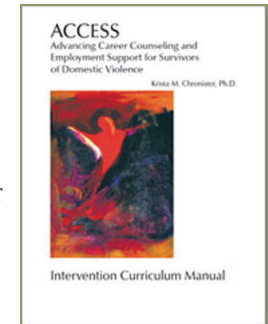
ACCESS activities and CIS allow survivors to:

- Complete meaningful and easy-to-use work skills assessment and job match activities.
- Search for up-to-date information about various career and educational opportunities.
- Search for financial aid.
- Use templates to create job portfolio documents (e.g., resumes, cover letters, school applications).
- Print or save portfolio documents online, along with job search results.
- Access their portfolios and vocational information at any time and from any United States location that offers CIS.

ACCESS PROGRAM MATERIALS

Basic Program Materials Package \$210 USD

The Basic Package includes all you need to set up and conduct ACCESS career-counseling groups within your agency, shelter, or practice. New customers need the Basic Package to get started.



The Basic Program Materials Package includes:

- ACCESS Facilitator's Curriculum Manual
- Eight Participant Workbooks
- CD with ACCESS handouts, power and control wheels, graduation certificates that can be printed or projected for presentations.

Career Information System (CIS) Program License - \$250 USD

CIS is an Internet-based career and education exploration program and an essential component of the ACCESS program. New customers need to purchase a CIS license along with the ACCESS Basic Package.

